



WATERHOUSE & VILLAGE STATION

Luxury Apartments at Sugar Mill Pond

- Washer/Dryer hook-ups (1 bedroom has stackable included)
- Wood floors, granite countertops, stainless appliances, crown molding
- Most with balconies and views of the POND
- Individual membership to Sugar Mill Athletic Club included
- 6 and 12 month leases available
- Pets allowed up to 25 pounds with non-refundable pet deposit
- Access to Children's Park and Swimming Pool

Waterhouse (w/balcony and study)

- 1 bedroom/1 bath - 870 square feet | \$950 per month
- 2 bedroom/2 bath - 1,154 square feet | \$1,250 per month
- 2 bedroom/2bath - 1,248 square feet | \$1,350 per month

Village Station (w/study)

- 2 bedroom/2 bath (balcony) - 1,206 square feet | \$1,250 per month
- 2 bedroom/2 bath (no balcony) - 1,206 square feet | \$1,250 per month
- 2 bedroom/2 bath + office/bedroom - 1,700 square feet | \$1,595 per month

Information contained in this document is deemed reliable but is not guaranteed. Prices are subject to change without notice. 12/11/17

For More Information
Call 337.856.2323



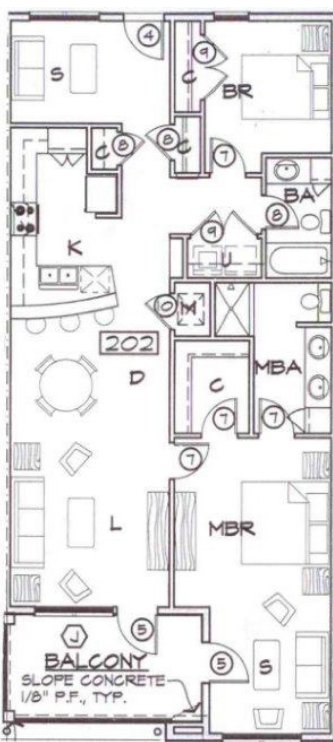
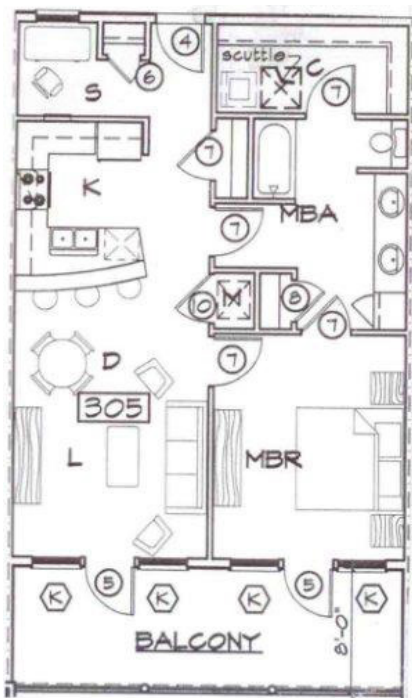
220 Prescott Boulevard, Suite 101
Youngsville, LA 70592
337.856.2323
www.sugarmillpond.com
Agents Licensed in Louisiana





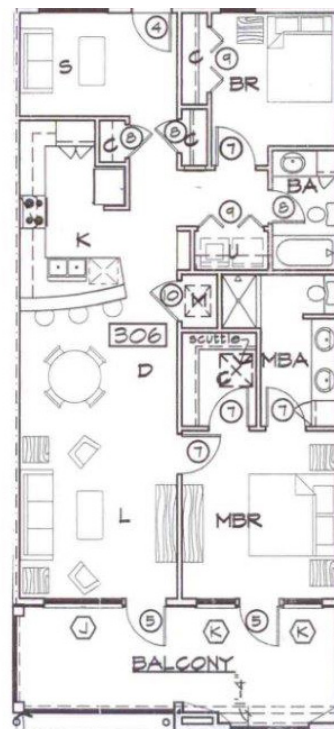
Waterhouse & Village Station Floor Plans

1 bed/1bath
870 sq.ft.



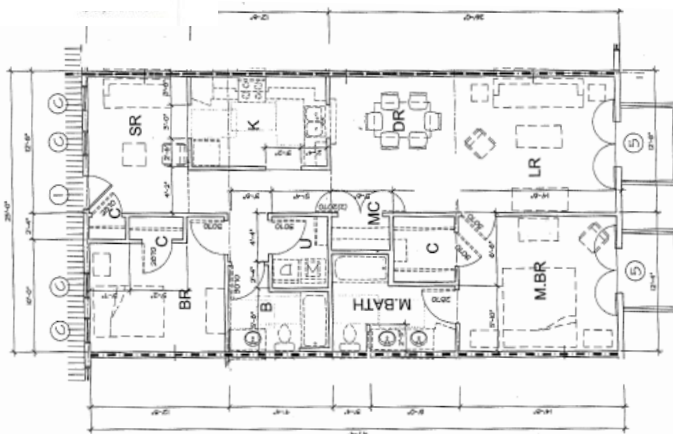
2 bed/2bath
1248 sq.ft.

2 bed/2bath
1154 sq.ft.



Waterhouse Floor Plans ^

Village Station Floor Plan -->



FOR MORE INFORMATION CALL 337.856.2323